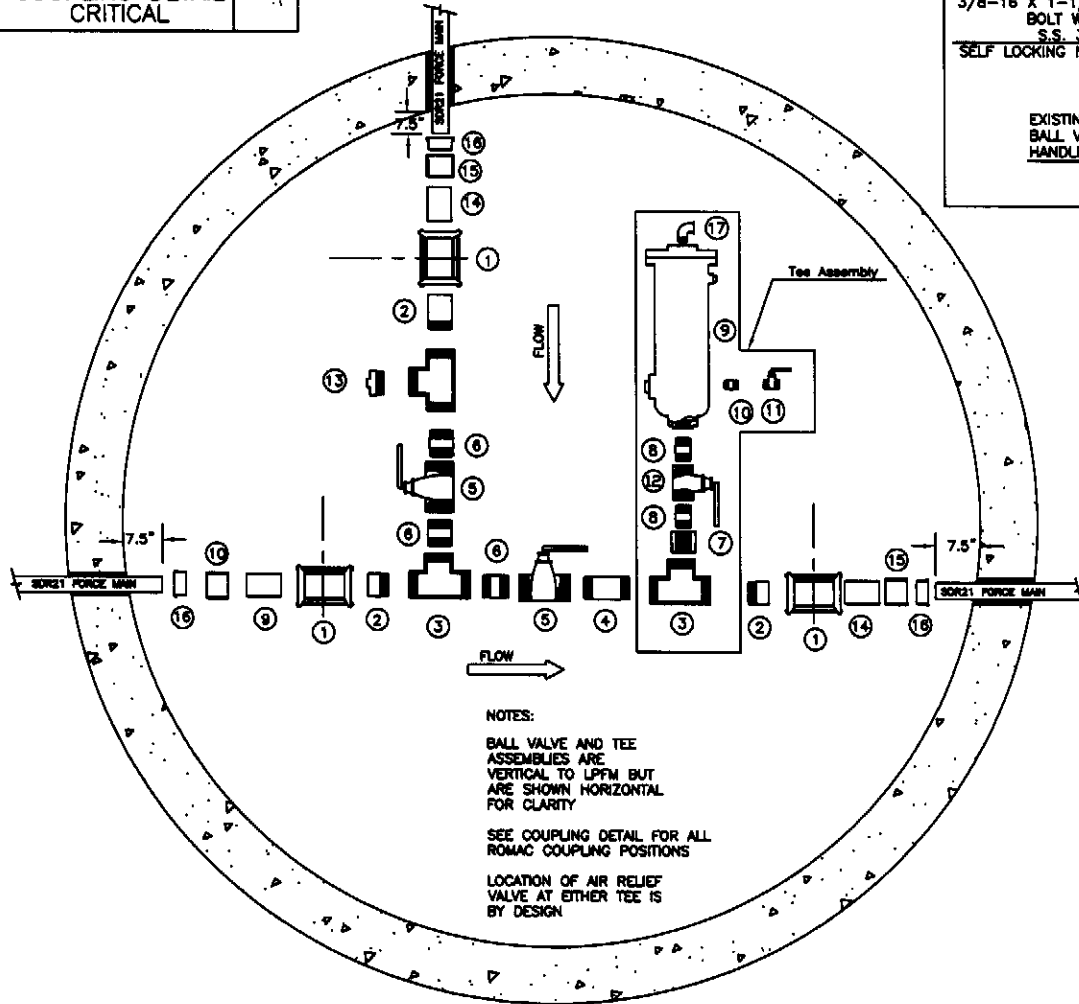


- NOTES
- ① ROMAC PART # 511-3.50 X 3.50 X 7SSFE WITH NBR GASKETS
 - ② 3" X 21" PIPE (ONE END THREADED)
 - ③ 3"X3"X3" THREADED TEE (150 PSI)
 - ④ 3" X 7-1/4" PIPE (BOTH ENDS THREADED)
 - ⑤ 3" S.S. STREAM FLOW BALL VALVE MODEL BV150SS3FP S.S. FULL PORT S.S. BALL VALVE THREADED HANDLE CUT TO FIT MAXIMUM CLEARANCE 1" REMOVE LATCH LOCK
 - ⑥ 3" X 4" NIPPLE (BOTH ENDS THREADED)
 - ⑦ 3" TO 2" BUSHING
 - ⑧ 2" X 3" NIPPLE (BOTH ENDS THREADED)
 - ⑨ AIR RELIEF VALVE ~~ARCO 443.1 OR 446.1~~ (AS REQUIRED) SANDBLASTED AND COATED COAL TAR EPOXY C-200 SHERWIN WILLIAMS OF EQUAL
 - ⑩ 1" X CLOSE S.S. NIPPLE
 - ⑪ 1" FULL PORT S.S. BALL VALVE
 - ⑫ 2" S.S. STREAM FLOW BALL VALVE MODEL BV180SS3FP S.S. FULL PORT S.S. BALL VALVE THREADED HANDLE MODIFIED (SEE HANDLE DETAIL) MAXIMUM CLEARANCE 1" REMOVE LATCH LOCK
 - ⑬ 3" S.S. PIPE PLUG
 - ⑭ 3" X 10" SDR21 PVC PIPE
 - ⑮ 3" SCHEDULE 40 PVC SOCKET GLUE COUPLING
 - ⑯ 3" X (1" TO 2-1/2") SCHEDULE 40 PVC SOCKET BUSHING
 - ⑰ S.S. STREET 90 ~~ARCO 443.1 REQUIRED~~ ~~ARCO 446.1 REQUIRED~~

Air Release Valves shall be Vent-Tech or Vent-O-Mat.

Air Release Valves shall be Vent-Tech or Vent-O-Mat.



NOTES:
 BALL VALVE AND TEE ASSEMBLIES ARE VERTICAL TO LPFM BUT ARE SHOWN HORIZONTAL FOR CLARITY
 SEE COUPLING DETAIL FOR ALL ROMAC COUPLING POSITIONS
 LOCATION OF AIR RELIEF VALVE AT EITHER TEE IS BY DESIGN

THE METROPOLITAN SEWER DISTRICT OF GREATER CINCINNATI

1" TO 2 1/2" LOW PRESSURE FORCE MAIN LEFT TEE AIR RELIEF CHAMBER DETAIL

GENERAL NOTES:
 * ALL MATERIALS MUST BE 304 STAINLESS STEEL SCHEDULE 40 (EXCEPT AS NOTED)

EXPLODED TOP VIEW
 NOT TO SCALE