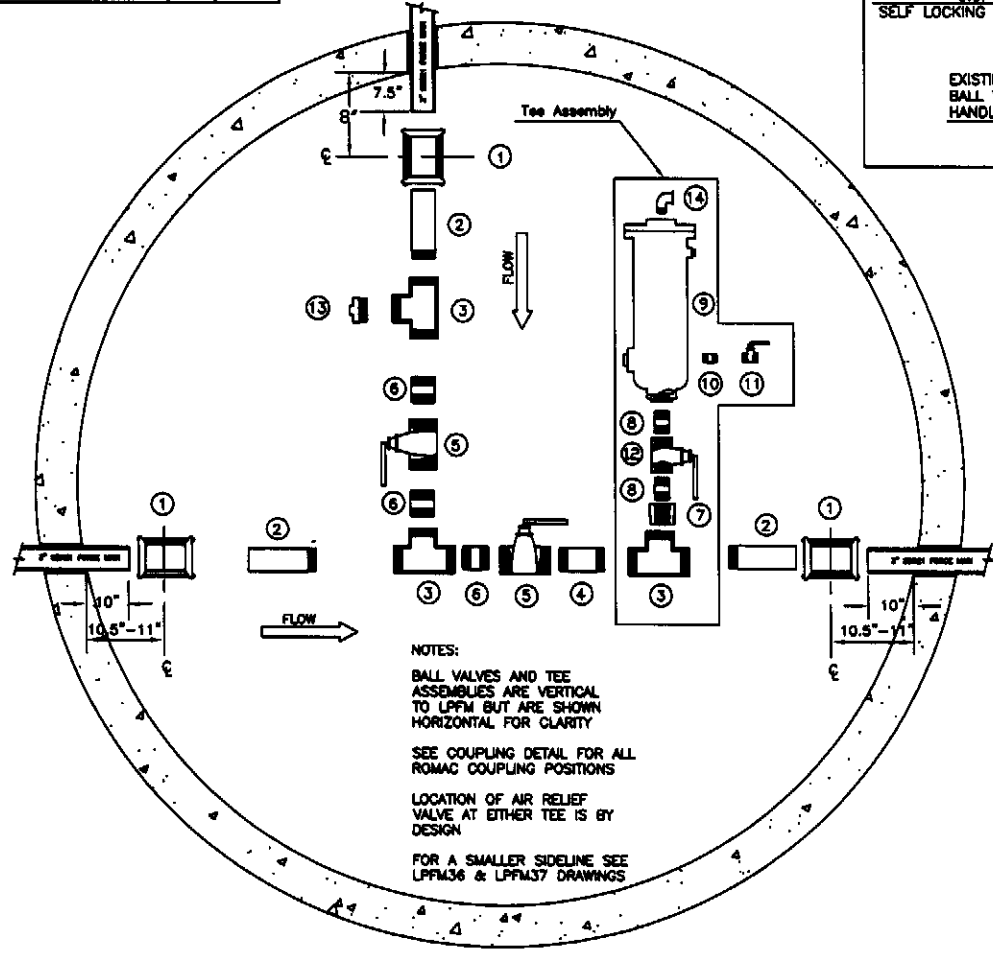


- NOTES
- ① ROMAC PART # S11-3.50 X 3.50 X 7SSFE WITH NBR GASKETS
 - ② 3" x 32" PIPE (ONE END THREADED)
 - ③ 3" X 3" X 3" THREADED TEE (150psi)
 - ④ 3" x 7-1/4" PIPE (BOTH ENDS THREADED)
 - ⑤ 3" S.S. STREAM FLOW BALL VALVE MODEL BV150SS3FP S.S. FULL PORT S.S. BALL VALVE THREADED HANDLE CUT TO FIT MAXIMUM CLEARANCE 1" REMOVE LATCH LOCK
 - ⑥ 3" x 4" NIPPLE (BOTH ENDS THREADED)
 - ⑦ 3" to 2" BUSHING
 - ⑧ 2" x 3" NIPPLE (BOTH ENDS THREADED)
 - ⑨ AIR RELIEF VALVE ~~APCS 115.1 OR 115.1~~ (AS REQUIRED) SANDBLASTED AND COATED COAL TAR EPOXY C-200 SHERWIN WILLIAMS OR EQUAL
 - ⑩ 1" X CLOSE S. S. NIPPLE
 - ⑪ 1" FULL PORT S.S. BALL VALVE
 - ⑫ 2" S.S. STREAM FLOW BALL VALVE MODEL BV150SS3FP S.S. FULL PORT S.S. BALL VALVE THREADED HANDLE MODIFIED (SEE HANDLE DETAIL) MAXIMUM CLEARANCE 1" REMOVE LATCH LOCK
 - ⑬ 3" S.S. PIPE PLUG
 - ⑭ S.S. STREET 90 ~~APCS 115.1 REQUIRES~~ ~~ABCO 115.1 REQUIRES 2"~~

Air Release Valves shall be Vent-Tech or Vent-O-Mat.

Air Release Valves shall be Vent-Tech or Vent-O-Mat.



NOTES:
 BALL VALVES AND TEE ASSEMBLIES ARE VERTICAL TO LPPM BUT ARE SHOWN HORIZONTAL FOR CLARITY
 SEE COUPLING DETAIL FOR ALL ROMAC COUPLING POSITIONS
 LOCATION OF AIR RELIEF VALVE AT EITHER TEE IS BY DESIGN
 FOR A SMALLER SIDELINE SEE LPPM36 & LPPM37 DRAWINGS

EXPLODED TOP VIEW
 NOT TO SCALE

THE METROPOLITAN SEWER DISTRICT OF GREATER CINCINNATI

**3" LOW PRESSURE FORCE MAIN
 LEFT TEE AIR RELIEF CHAMBER DETAIL**

GENERAL NOTES:
 * ALL MATERIALS MUST BE 304 STAINLESS STEEL SCHEDULE 40 (EXCEPT AS NOTED)